

# SIS

## SIS 797 with ACT! By SIMPLEX

### Active Channel Technology Adjusts for Various Insert Thicknesses

**SIS 797 with ACT! is an Easy-to-Build, Easy-to-Clean Frame System**

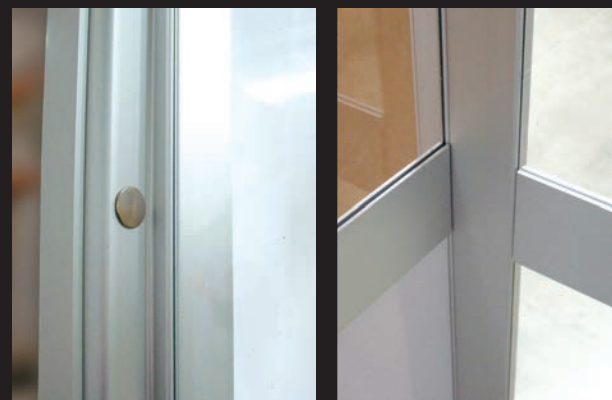
Isolation and environmental control has taken a huge step forward for the medical device and pharmaceutical industries, thanks to the latest innovation from Simplex Isolation Systems.

The Simplex SIS 797 Enclosure System with ACT! – **A**ctive **C**hannel **T**echnology – allows you to adjust the insert channel of the SIS frame for different sizes of solid inserts from 1/8" to 3/8". The ACT! design creates a snug interior mounting of the insert that is flush with the frame, making the assembled wall easy to keep clean.

- Can be fitted for wall panel inserts of ABS, polycarbonate, aluminum composite, acrylic, tempered glass or other materials.
- Easy-to-clean features are ideal for USP <797> applications for pharmaceutical compounding and medical device manufacturing, assembly and packaging applications.
- Suitable for ISO Class 8 (Class 100,000) applications to Class 4 (Class 10).
- Order the SIS 797 with the Simplex integrated ceiling system in factory assembled modules for fast and simple construction.
- All assembly hardware is accessed from the outside and sealed for a professional look.
- Can be designed as a single-pass cleanroom, or as a re-circulating design with air-chase walls and ceiling plenum.
- Engineered to be modular. When your needs expand, so does the SIS 797.

**The SIS 797 with ACT! As Simplex as 1, 2, 3!**

**CALL 1-800-854-7951 TODAY FOR A QUOTE,  
SPECIFICATIONS, OR FREE DESIGN HELP.**

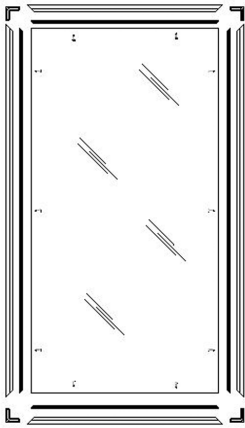


# SIS

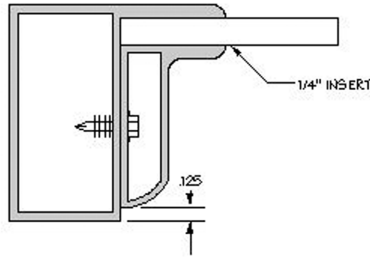
## SIS 797 with ACT!

By SIMPLEX

**SIS 797 with ACT! has the clean, high-tech look that is also ideal for office dividers, machine and safety enclosures**

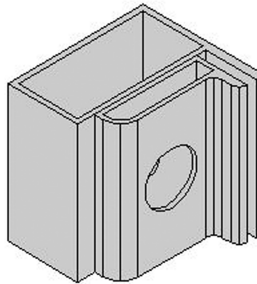


The SIS 797 system uses individual modular frames which are easily assembled with internal corner keys. Frames are available pre-assembled or shipped unassembled.



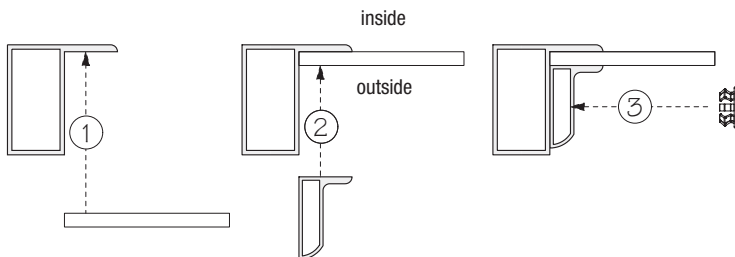
### A Snug Fit Means Easy Cleaning

Inserts of ABS, acrylic, polycarbonate, fiberboard and even glass fit snugly. Active Channel Technology eliminates those hidden spaces where contaminants can hide and cause problems in your environment. The frame and insert create a near flush surface for easy wipe down. Perfect for USP <797> applications.



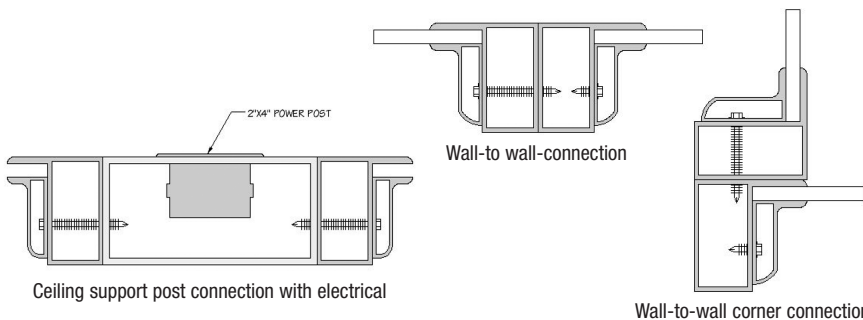
The 2" x 2" extrusion comes in anodized aluminum. It is also available in a powder coated finish.

The SIS 797 with ACT! is available as a complete enclosure system, or as a wall system to divide existing space. This revolutionary new system can be shipped as a pre-assembled turnkey room or as raw material for cutting and building to your own specifications.



### Active Channel Technology

Like every new product or feature from Simplex, this one is so simple you wonder why it wasn't on the market years ago. ACT! is an adjustable, two-piece extrusion that allows you to accommodate insert thicknesses from 1/8" to 3/8".



**SIS 797 with ACT!** is designed to provide a flush surface from insert to extrusion, even at those important points at ceiling posts, wall-to-wall connections and wall-to-wall corner connections

**CALL 1-800-854-7951 TODAY FOR A QUOTE, SPECIFICATIONS, OR FREE DESIGN HELP.**



**Simplex Isolation Systems**

14500 Miller Ave.

Fontana, CA 92336

Toll-free: **800-854-7951**

Fax: 909-429-0217

[www.simplexisolationssystem.com](http://www.simplexisolationssystem.com)

[sales@simplexis.net](mailto:sales@simplexis.net)

**Distributed by:**