



## Life Science Products

*The LYNX mission is to provide Animal Care Washing Systems of the highest standards, quality, and reliability in the industry. Our service and customer care will be unmatched.*

### Model 450LX Cage and Rack Washer

The LYNX Model 450LX Cage and Rack Washer is a heavy duty, large capacity, hydro-spray washer designed for thorough, efficient cleaning of cages, racks, debris pans, and miscellaneous items used in the care of laboratory animals. Pit mounting is standard.



#### Size:

Compartment: 72" wide x 85" high x 141" long

Overall Unit: 108" wide x 104" high x 149" long

**Note:** Washer can be designed to any size to meet new or existing applications. (Overall size may vary depending on chosen options)

#### Standard Features:

- Modular Construction
- Knock-down Shipment
- Oscillating Spray Jet System
- Personnel Safety Features
- Micro-computer Control System with Modem Package
- Automatic Ten-phase Treatment Cycle
- Automatic Self-cleaning Screen
- Temperature Guarantee
- Insulated Construction
- Incoming Utility Gauges
- Interior Illumination
- S/S Recirculation Piping and Components

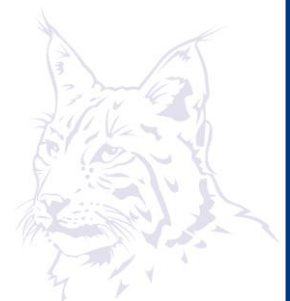
#### Construction:

- All Stainless Steel Construction
- Automatic Water Level Control
- 2-15 HP Treatment Pumps
- Stainless Steel Steam Coil Heating
- Touch Screen Operator Interface
- Programmable Cycles
- Direct Read Pump Pressure Gauge
- Double-pane Glass Window

#### Accessories:

- Floor Ramps
- Modular Walls
- Barrier Wall Flange(s)
- Bottle Wash Cart
- Universal Cage Wash Cart

*Washing • Disinfection • Filling • Conveying*



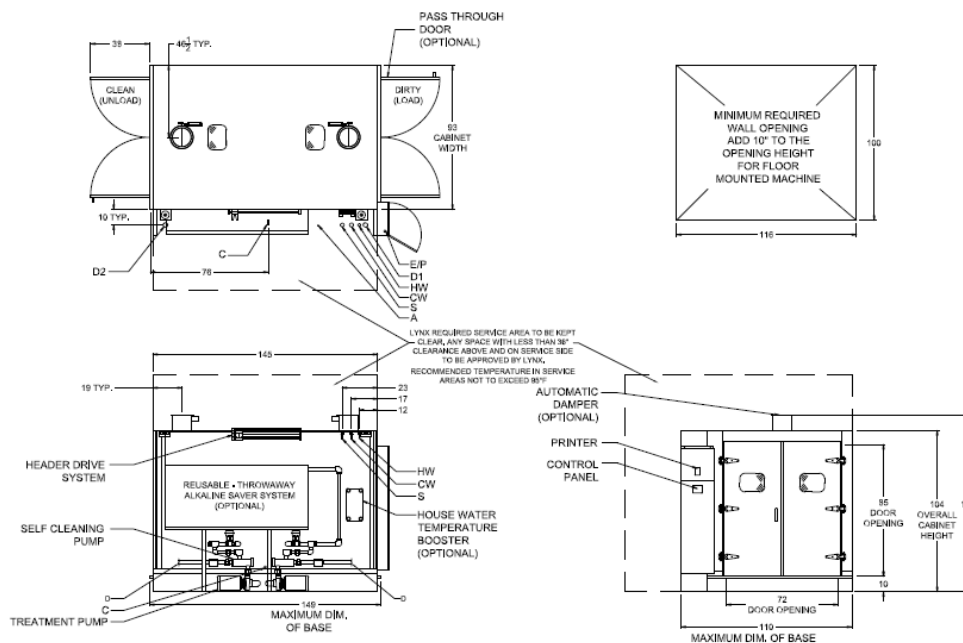
## Utilities: 450LX

E	Electrical	3-60-208/230/460 V	32 HP	
S	Steam	2" NPT	35-80 PSI	Dynamic $\pm 5$ PSI
HW	Hot Water	1½" NPT	35 PSI	1000 #/Hr Flow Rate (1200 #/Hr with optional HW Heat Exchanger)
C	Condensate	2" NPT		50 GPM @ 140 °F $\pm 5$ °F (75 Gallon Sump Capacity)
D	Drain	(2) - 4" Floor Drains (Min)	120 GPM	Flow Rate @ 200 °F
V	Vent	12" ID Duct (2 required)	450 CFM (ea.)	Saturated Vapor @ 190 °F
A	Air	½" NPT	80-100 PSI	6 CFM Flow Rate
CW*	Cold Water	1½" NPT	35 PSI	100 GPM @ 50 °F $\pm 5$ °F

\*CW – Required if drain discharge cool-down package is ordered

## Optional Features:

- LYNX OPTI-Wash™ System
- Pit or Floor Mounted
- Right or Left Hand Services
- Re-usable Throwaway Alkaline and/or Acid Tanks
- House Hot Water Heat Exchanger
- Low Steam Pressure Package
- Integral Data Collection System
- LYNX Smart-Cool™ System
- Automatic Damper
- Center Header System
- Pass-thru Unit
- Drain Discharge Cool Down/Tank
- Feeder Bottle Washing System
- Pan Washing
- Automatic Watering Rack Flush System
- Pass-thru Door Interlock System
- Air Compressor
- Split Base for Special Entry
- Exhaust Fan
- Strip Chart Printer
- Electric Heat System
- Utility Enclosure Panels
- Detergent Dispensing Systems
- pH Neutralization System
- Seismic Tie Down



• Specifications are subject to change



LYNX Product Group  
650 Lake Street  
Wilson, NY 14172  
716.751.3100 / 3101(fax)

For further information, please contact:  
[lynxpg.com](http://lynxpg.com)  
info@lynxpg.com • service@lynxpg.com  
parts@lynxpg.com Rev 013015