

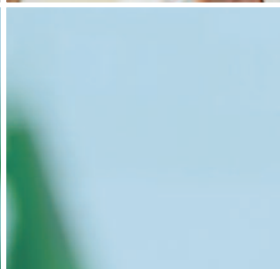


SAFE

SCIENTIFIC ANIMAL FOOD & ENGINEERING

CUSTOM DIETS

The Tailored Diet Service



REFERENCE DIETS

U8978	AIN-76
U8978 Version 22	AIN-93G (growth and reproduction)
U8959 Version 1	210 control diet, 10% of the energy from fat

HIGH FAT DIETS, ENRICHED WITH SUGARS

U8957 Version 1	230 HF 60 % of the energy from fat (lard)
U8956 Version 1	231 HF 70% of the energy from fat (lard)
U8955 Version 2	235 HF 45 % of the energy from fat (lard)
U8954 Version 1	236 HF 72% of the energy from fat (lard)
U8954 Version 27	Keyes high in saccharose (Cariogenic)
U8960 Version 5	Hyperglucidic 30% sucrose
U8954 Version 133	245 HF 45 % of the energy from fat (D12451 Premix AIN)
U8954 Version 130	233 HF 61% of the energy from fat (D12492 Premix AIN)
U8978 Version 19	260 HF 60 % of the energy from fat (butter)
U8440	107 HF 15% fat from lard • Monkey high fat diet

HYPERCHOLESTEROLIZING DIETS

U8220 Version 151	A04 + 16% cocoa butter + 1,25% cholesterol
U8951 Version 1	214 B + 4.5% cholesterol
U8952 Version 1	214 S + 2.0% cholesterol
U8953 Version 1	214 H + 0.5% cholesterol
U8958 Version 66	Atheromatous: 0.5% cholesterol, 15% lard
U8958 Version 52	Western 0.15% cholesterol, 20% butter
U8958 Version 35	Western 0.20% cholesterol, 21% butter

DIETS HIGH IN CELLULOSE

U8200 Version 39	A03 + 20% cellulose
U8220 Version 87	A04 + 20% cellulose

MACRONUTRIENT DIETS: PROTEINS, FATS

U8959 Version 92	Hyperproteinic 54% protein
U8958 Version 27	Hyperproteinic 50% protein
U8958 Version 65	Hyperproteinic 40% protein
U8220 Version 264	A04 low protéine 10%
U8958 Version 174	Methionin/choline deficient (Steatohepatitis)
U8958 Version 224	Tryptophan Deficient

ALTERED MINERAL OR MICRONUTRIENT DIETS

U8200 Version 79	A03 + 0.12% sodium (without salt and bicarbonate)
U8224 Version 66	A04 + 1.2% Phosphorus + 1.04% calcium
U8220 Version 147	A04 + 0.75% adénin + 1,1% de calcium + 0,9 % de phosphorus
U8958 Version 176	Iron deficient
U8958 Version 24	Zinc deficient
U8200 Version 82	A03 + 8% salt + 0.76% Potassium chloride
U8959 Version 88	Low Se and Vit. E (Cardiovascular disorders, inflammatory,...)
U8958 Version 94	Iodine deficient

ALTERED VITAMIN DIETS

U8200 Version 94	A03 Vitamin D deficient (Osteoporosis, rickets)
U8220 Version 231	A04 Vitamin K deficient (Osteoporosis, Leukemia,...)
U8220 Version 72	A04 Vitamin E deficient
U8958 Version 157	A04 Vitamin A deficient (Xerophthalmia)
U8958 Version 194	Low folic acid (Gastrectomy, celiac disease,...)

DIETS INDUCING A PHENOTYPE

U8200 Version 1	A03 + 1 g/kg Doxycyclin
U8200 Version 35	A03 + 0,5 g/kg Doxycyclin
U8200 Version 91	A03 + 6 g/kg Doxycyclin
U8200 Version 92	A03 + 0,2 g/kg Doxycyclin
U8200 Version 115	A03 + 0,625 g/kg Doxycyclin
U8200 Version 100	A03 + 10 g/kg Doxycyclin
U8220 Version 12	A04 + 1 g/kg Doxycyclin
U8220 Version 23	A04 + 2 g/kg Doxycyclin
U8220 Version 232	A04 + 0,625 g/kg Doxycyclin
U8200 Version 16	A03 + 2 g/kg Fenofibrate
U8200	A03 + 250 mg/kg Tamoxifen

DIETS WITH YOUR OWN INGREDIENTS

Standard Diet + Probucol, Rosiglitazone, Eplerone, Quercetin
Standard Diet + Inulin, Clay, Maltodextrin, Prebiotics, Omega 3-6-9, fatty acids, silica, ethanol Lieber-DeCarli

MEDICATED DIETS, ADDITIVES, ACTIVE INGREDIENT

Wide-spectrum antiparasitic drug *

* In order to comply with European Community regulation a veterinary prescription is compulsory before any production starts.

LOW FLUORESCENCE DIET

U8978	AIN-76
U8978 Version 12	AIN-93G (growth and reproduction)
U8959 Version 1	210 control diet, 10% of the energy by fat
U8960 Version 4	210 without sugar, 50% corn starch

All SAFE rodent standard diets do not contain alfalfa.

PACKAGING

Packaging 10 kg paper bag - vacuumed. Lead time 2 to 3 weeks. Minimun batch of 10 kg.

NON STANDARD PRESENTATIONS

For any non-standard presentation, consider a four weeks lead time, prices on request.

For a diet containing molecule, it is mandatory to provide the facility registrition and the licence of the experimenting on animals. For ingredients supplied by the client, a safety data sheet is required.

DO YOU HAVE ANY SPECIAL NEEDS?

We can put together the diet that best answers your own needs. A Custom Diets team is there to listen to you. According to your needs, we will advise you on the solutions for formulations and the diet presentation format that is best suited to your requirements. You can contact our scientific adviser at: info@safe-diets.com

OPTIONAL SERVICES

Providing of ingredients or raw materials
Irradiation fee, for every 200 kg (lead time 1 week)
Supplement for 2 kg packaging
Supplement for 1 kg packaging

POWDERED DIET

During the powdering process, loss of weight occurs due to the manufacturing process after grinding pellets (less moisture).

POWDER for pelleting P 3.5
POWDER 95 % < 1 mm P 2.5
POWDER 95 % < 0.5 mm P 1
Complete analytical control of Non Standard Diet: antibiotic test included

GEL DIETS

GelDiet are ready and easy to use, irradiated at 10 kGy, shelf life 12 months. 6 kg Box

U8974P01R	GELDIET TRANSPORT*	Diet + 60 % water • Pot of 100 g
U8972P01R	GELDIET ENERGY*	High energy + 60 % water • Pot of 100 g
U8976P01R	GELDIET CLASSIC*	SAFE diet + 70 % water • Pot of 100 g
U8970P01R	GELDIET WATER*	99 % water, Thermoreversible • Pot of 100 g
U8979P01R	GELDIET HIGH FAT*	49% Energy from fat • Pot of 100 g

* Available for dogs and primates



CUSTOM DIETS

The Custom Diets department of SAFE has received all the Food and Health accreditations. This division is supervised by a pharmacist and a team of specialized engineers and scientists. With more than 55 years's experience, and recognized leadership, SAFE formulates and produces Custom Diets for the international scientific community. Diet induced disease phenotypes: Cancer, Osteoporosis, Obesity, Hypertension, Diabetes, Atherosclerosis, Toxicology, Metabolic syndrome, ... Don't hesitate to ask our Custom Diets Brochure or visit our web site: www.safe-diets.com



The team and its specially-designated units

The Custom diets department prepares upon request the diets necessary to certain protocols, completing the range of the standard SAFE range. These tailor-made diets are produced in a specially designated unit: the SAFE Quality Charter also applies to custom diets. This production unit is fitted with scales and mixers adapted to the manufacture of diets. The management of these production systems is computer-assisted. The personnel are designated as the technical support, who will be there to assist you before and after you place the order.



Quality and Traceability

The SAFE Custom Diets department is ISO 9001, ISO 14001 certified and hold a certificate of approval from the veterinary services for the production of medicated diets and containing molecules for Research. The unit also holds specific authorization for the use of non-viable Genetically Modified vegetal Organisms. The raw materials are regularly certified and controlled. Each programmed production batch is controlled and recorded on a computer data base. A batch number and a Best-Before-End Date (BBED) are printed on the label. A notice sticker is put on the packaging as proof of any irradiation that may have been effected.



Packaging

- Presentation is in powder form, in paste, granules, liquid or gel.
- Packaging is in buckets (1 – 2 – 3 – 5 liters), in jars (100 g) or in bags (1 to 10 kg).
- Packaging suited to the health status of your animal facility.
- Irradiation is possible for products from 10, 25 to 40 kGy. Since most of the Purified Diets cannot be autoclaved, we recommend that they be irradiated. They are vacuum-sealed. SAFE irradiates each quantity bag by bag – the only way to be sure that they receive the same homogeneous dosage.



Deliveries

The lead time from order to delivery is 10 working days. The minimum order is for 10 kg per diet. Above 10 kg, we adapt the production to your needs. You should add an extra 7 working days for a batch that has to be irradiated. We deliver to more than 25 different countries at the present.



R&D, Advice and Confidentiality

The SAFE nutritionists will guide you all the way through the development of your projects. It is possible to sign a confidentiality agreement for all the tasks that you entrust to SAFE. The bibliographical references for using our diets are available on our website at: www.safe-diets.com



Services and Flexibility

- Extra services are available on request in order to adjust your orders to any developments in your protocols:
- supply of raw materials: casein, wheat, lard, AIN premix, ... above and beyond the diet per se,
 - sterilization of certain materials or consumables for your animal facility,
 - the carrying out of chemical, physical and microbiological analyses,
 - this also comes down to amending quantities and dates, wherever that may be possible...

A specific diet for each of your research programs*

The diets formulated on the basis of SAFE standard diets (A03, A04, 112, etc.) allow you to apply a low and controlled level for certain elements, without necessarily depleting the diet (Potassium, Sodium, Fats, etc.).

They can also be enriched with target nutriments (Iron, Sodium, Potassium, Cholesterol, etc.). These special diets can be easily compared to a standard diet and can even be certified.

To obtain high-level of reduction in elements, the diet has to be reconstituted on the basis of purified raw materials. These purified diets also make it possible to obtain high fat, hypercholesterolizing diets...



The formulae are also customized and it is possible to:

- **enrich the highly reduced diets** by adding targeted materials and by using different sources,
- **incorporate a natural raw material** in a purified diet,
- **offer the feed** in granular, paste, liquid or gel form.

Depending on the protocol, the control formula may be either a Purified Diet or else a standard diet.

* a non exhaustive list is given on the back



ISO 9001,
ISO 14001,
HACCP,
GLP & GMP reliant

Route de Saint Bris 89290, Augy • France
T: +33(0)3 86 53 76 90 • Fax: +33(0)3 86 53 35 96
info@safe-diets.com • www.safe-diets.com

